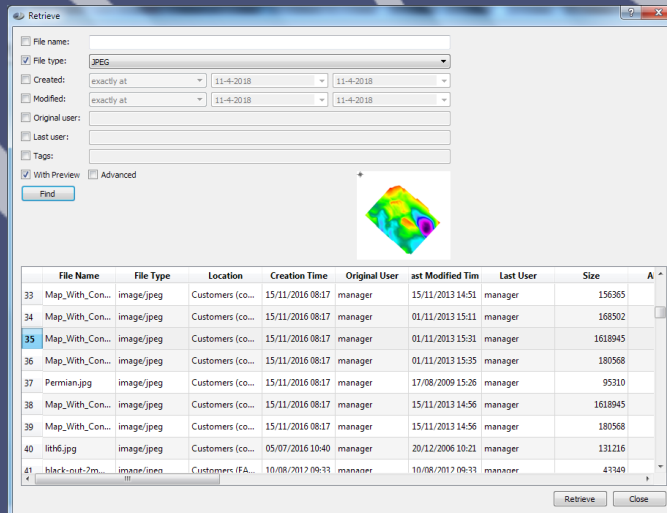


JustSEARCH



It is estimated that geoscientists can spend up to 30% of their time on data management issues.

To reduce this time, and spend more valuable time on interpretation and analysis, they really need the ability to access geoscience data more easily.

*This is where **JustSEARCH** can help. It allows geoscientists to access all the available image files quickly and easily - no more "data silos"!*

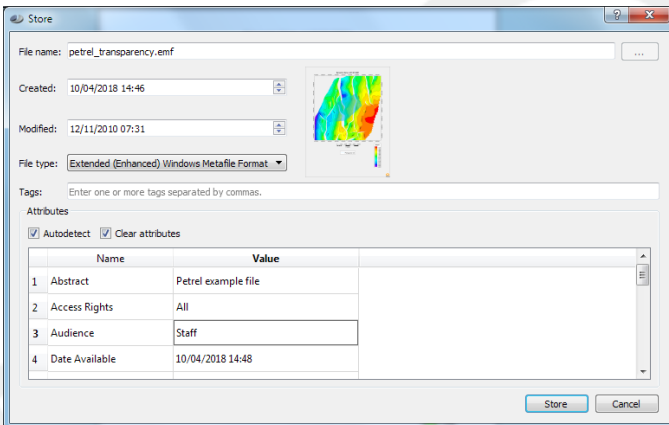
- **easy to use**
- **gives fast access to images**
- **handles most of the common image data formats used in geoscience**
- **easy to install**
- **very affordable**
- **top-class technical support**



Store

With Store a preview image will be generated and shown if possible. This preview will be stored in the JustSEARCH Server for use when doing a retrieve.

You can enter one or more attribute values. The built-in attribute scanner will try to determine any attribute it can find if the "autodetect" option is enabled.



Easy

It is easy to install and operate. However, if required, Justcroft International can supply a consultant to install the tool and give training to prospective users.

Affordable

JustSEARCH is very affordable. By reducing the time geoscientists take in finding data, payback is almost immediate.

Image data formats

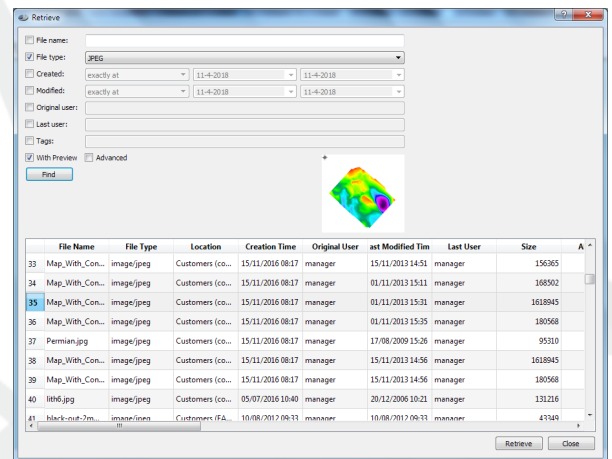
Currently it handles most of the common image data formats used by geoscientists but it will be updated to handle other image, and non-image, data formats on feedback from users.

Retrieve

Retrieve allows users to retrieve a file by specifying any known attributes without needing to know its location.

These attributes could include -

- file name (or part of the file name)
- file type
- date created
- date modified
- creator
- tag values



Build Index

Building the Search Index in batch can be done through the Build Search Index dialog box.

