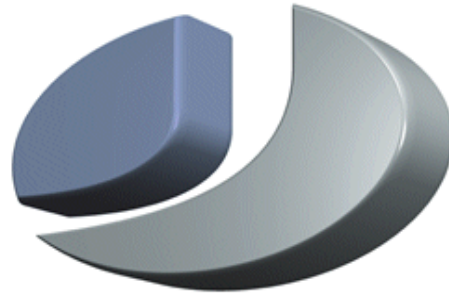


JUSTCROFT INTERNATIONAL
IMAGE DATA MANAGEMENT



Why JustIMAGE 5.2

Justcroft International

Why JustIMAGE 5.2

Revision: 1.0
Copyright© 2017

JustIMAGE, JustCGM and the Justcroft logo are trademarks of Justcroft International Ltd./ All rights reserved. PostScript® is a registered trademark of the Adobe Systems Incorporated. Windows® is a registered trademark of the Microsoft® Corporation. Other programs or company names mentioned in this manual may be either registered trademarks or trademarks of their respective owners.

Table of Contents

Why should you use JustIMAGE 5.2.....	1
What to do with encrypted multi-page PDF files?.....	1
Do you have a lot of Schlumberger PDS files?.....	1
Hot directory support.....	2
FlexNet Borrow.....	2
Wasting paper, ink and time?.....	3
Your files fail to load in CorelDRAW or Canvas?.....	4
Do you have PowerPoint issues with seismic images?.....	4
Do you have problems with Editing an image?.....	5
Are you using PowerPoint as presentation tool?.....	6
JustIMAGE Driver.....	7
When was the last time you were looking for an image file?.....	8

Why should you use JustIMAGE 5.2

Please find below an overview of the reasons why you should use JustIMAGE 5.2.

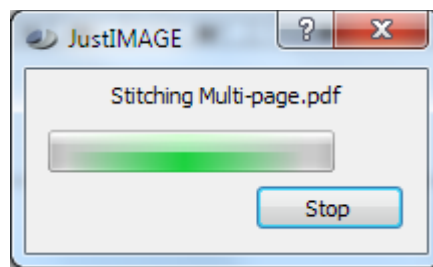
What to do with encrypted multi-page PDF files?

Encrypted multi-page PDF files are often difficult to handle but using the JustIMAGE vector PDF converter and the Stitch tool you are able to create a continuous vector image.

Having a 9 page encrypted PDF file

VDC (0,0) (7801,10800) 13.002 x 18.000 inch (Pic. 1/9)

Using Stitch

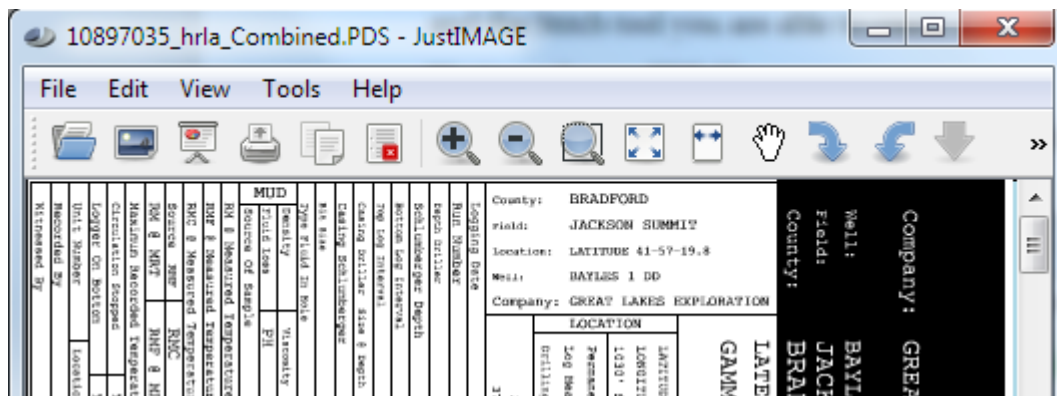


End result one continuous image

VDC (0,0) (7801,97201) 13.002 x 162.002 inch

Do you have a lot of Schlumberger PDS files?

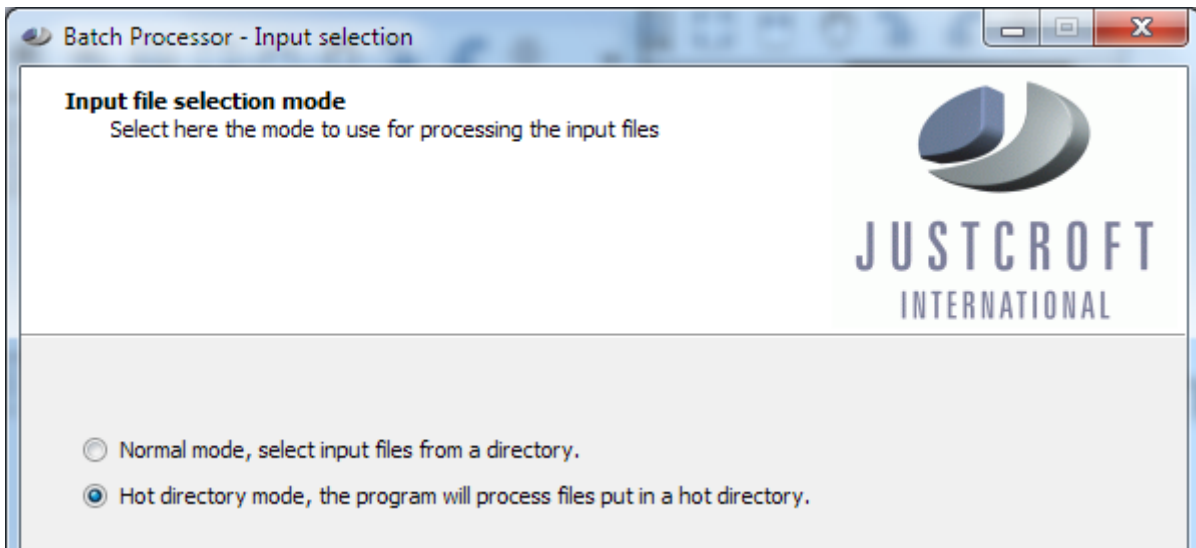
Do you have a lot of Schlumberger PDS files and want to convert them into PDF? Use the Batch Processor to convert them in one go. JustIMAGE supports the PDS files after installing PDSView.



Why should you use JustIMAGE 5.2

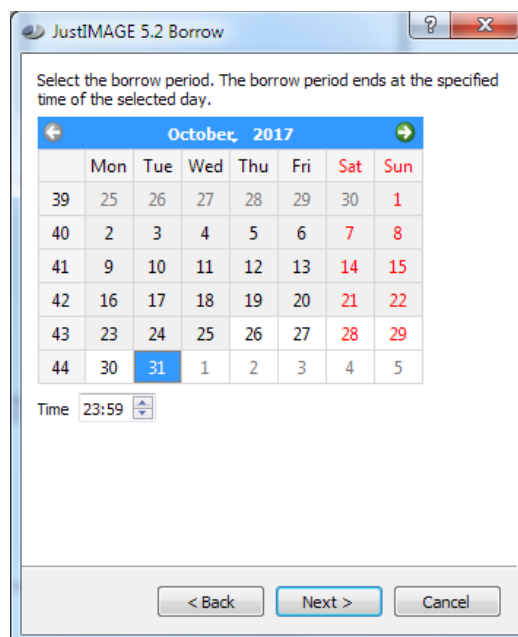
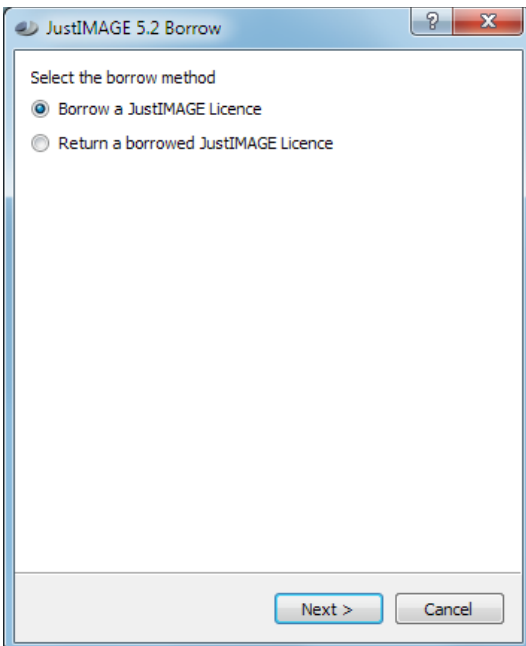
Hot directory support

Use the Batch Processor to convert or print image in batch from selected input files or from a "Hot directory".



FlexNet Borrow

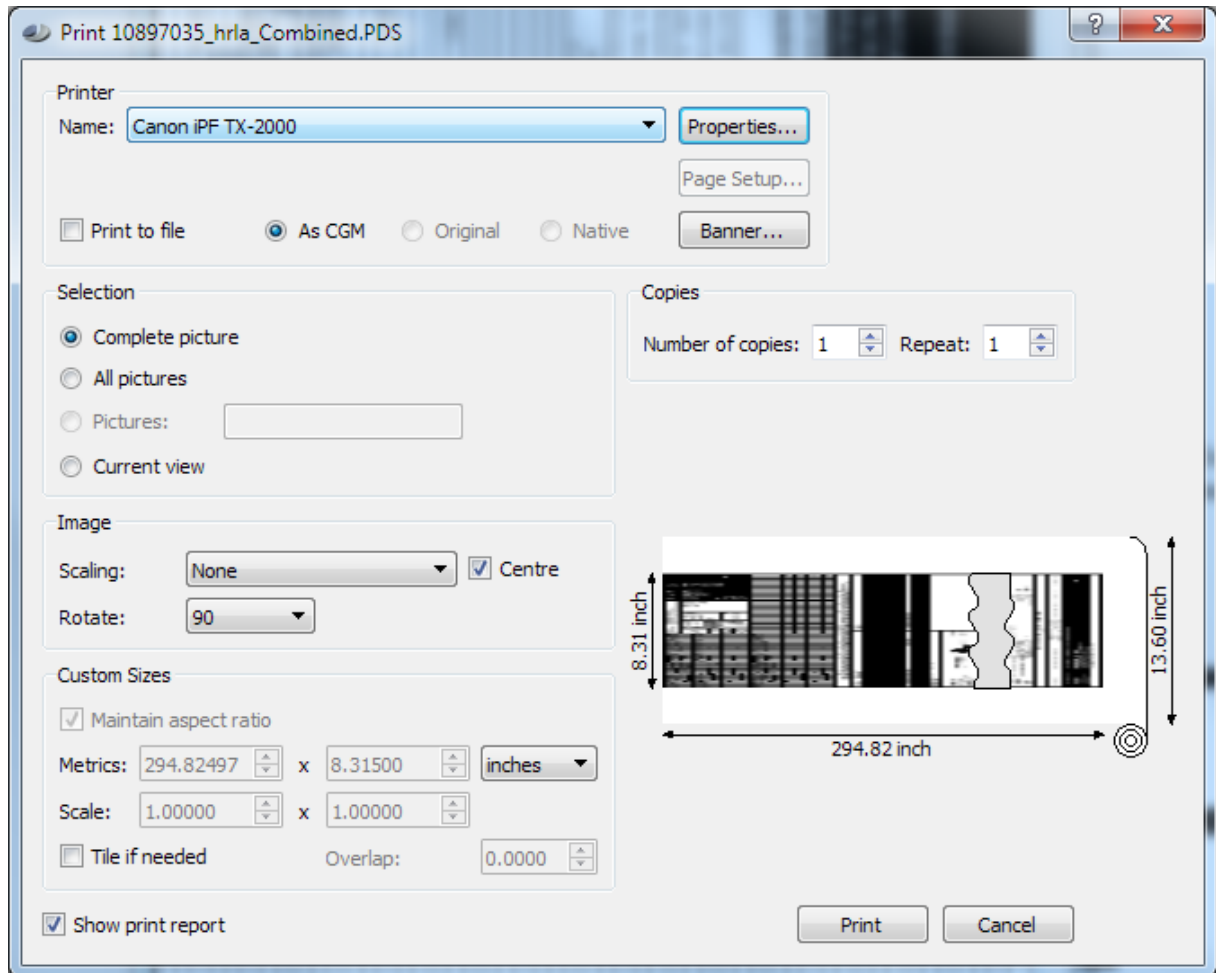
The FlexNet borrow tool is added in JustIMAGE 5.2 and is available in the FlexNet version of JustIMAGE 5.2.



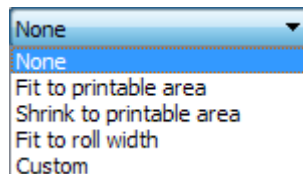
Wasting paper, ink and time?

Have you had enough of wasting paper, ink and time when printing? Use the Justcroft drivers for the HP DesignJet, CANON GARO iPF, iSys, Neuralog or Printrex printers.

Printing well log images can be a hassle because you often need to select a printing area within the print window. Not with JustIMAGE, as it shows you the image compared with the roll paper width and length!



JustIMAGE also offers several scaling options.



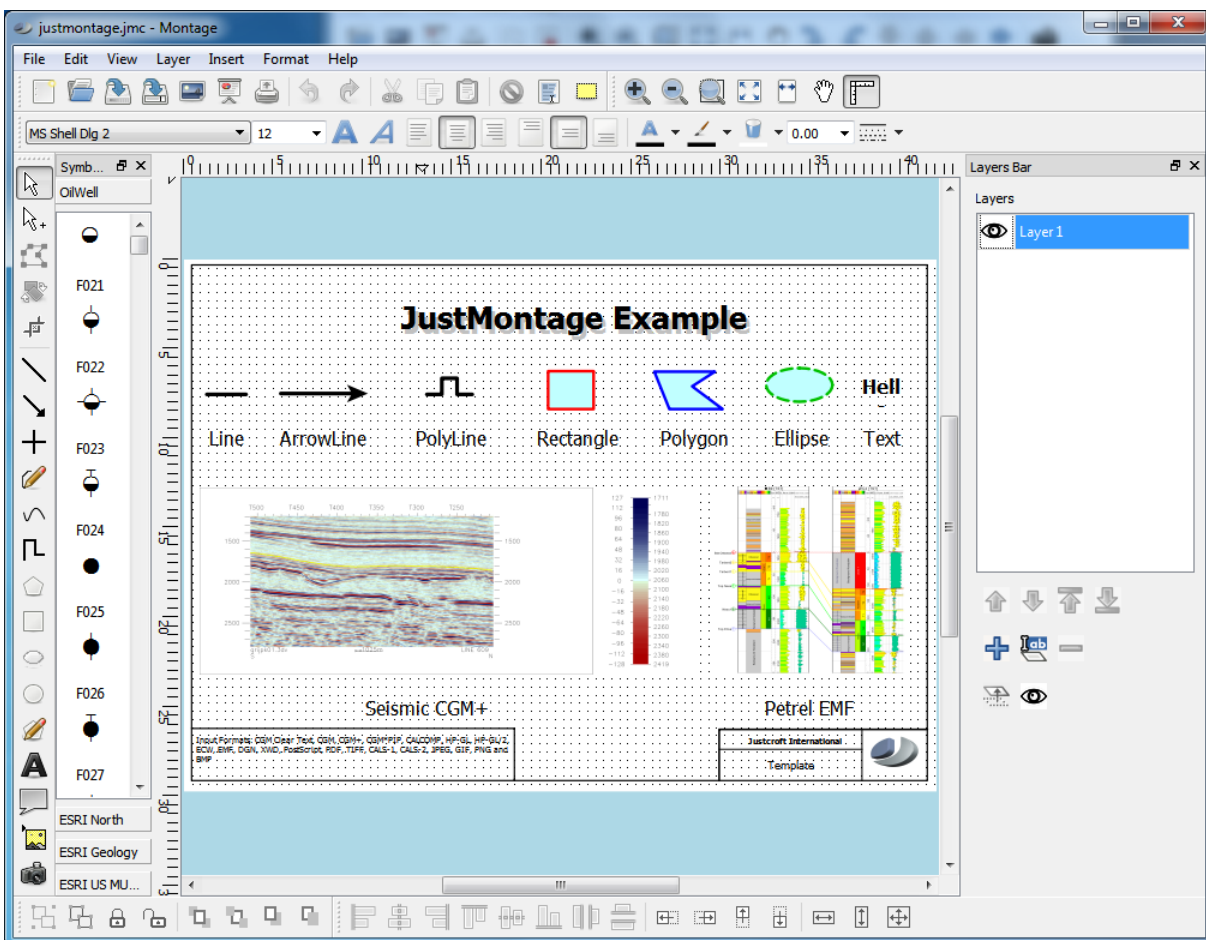
Why should you use JustIMAGE 5.2

Your files fail to load in CorelDRAW or Canvas?

CorelDRAW and Canvas have, as standard, no direct support for importing CGM+ and CGM*PIP files. Use the CGM Optimiser program to create image files that can be imported in applications such as CorelDRAW and Canvas.

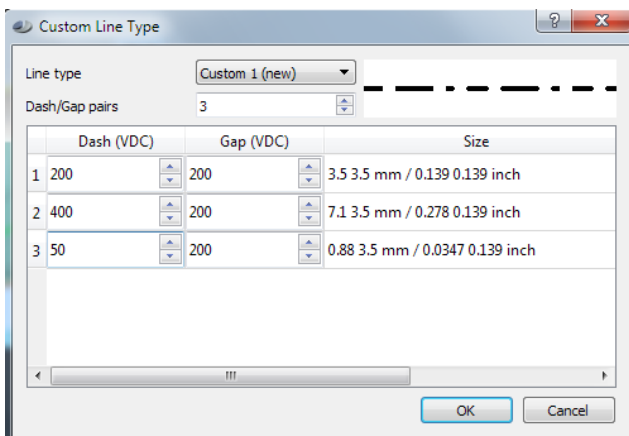
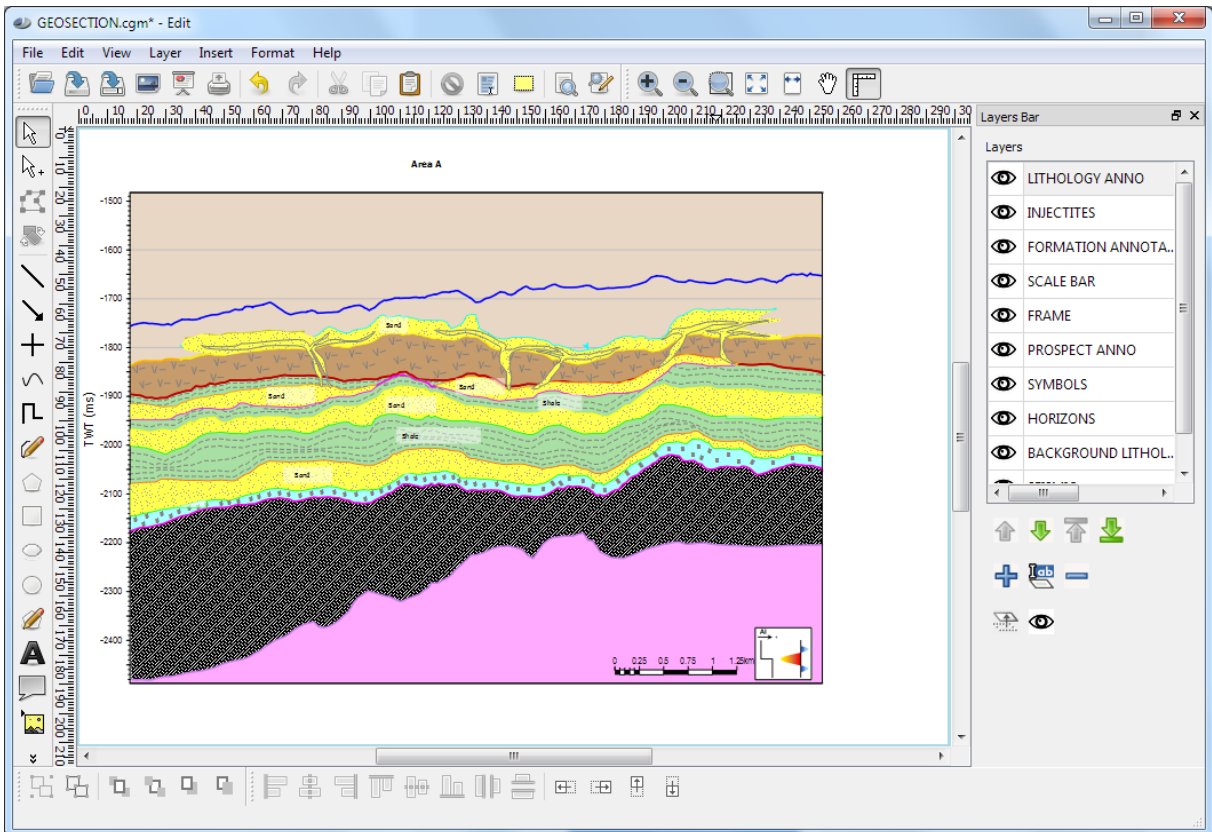
Do you have PowerPoint issues with seismic images?

Are you having issues when using PowerPoint to create posters with seismic images? The Montage module is a program that allows you to create compositions of images in combination with graphical shapes on a canvas.



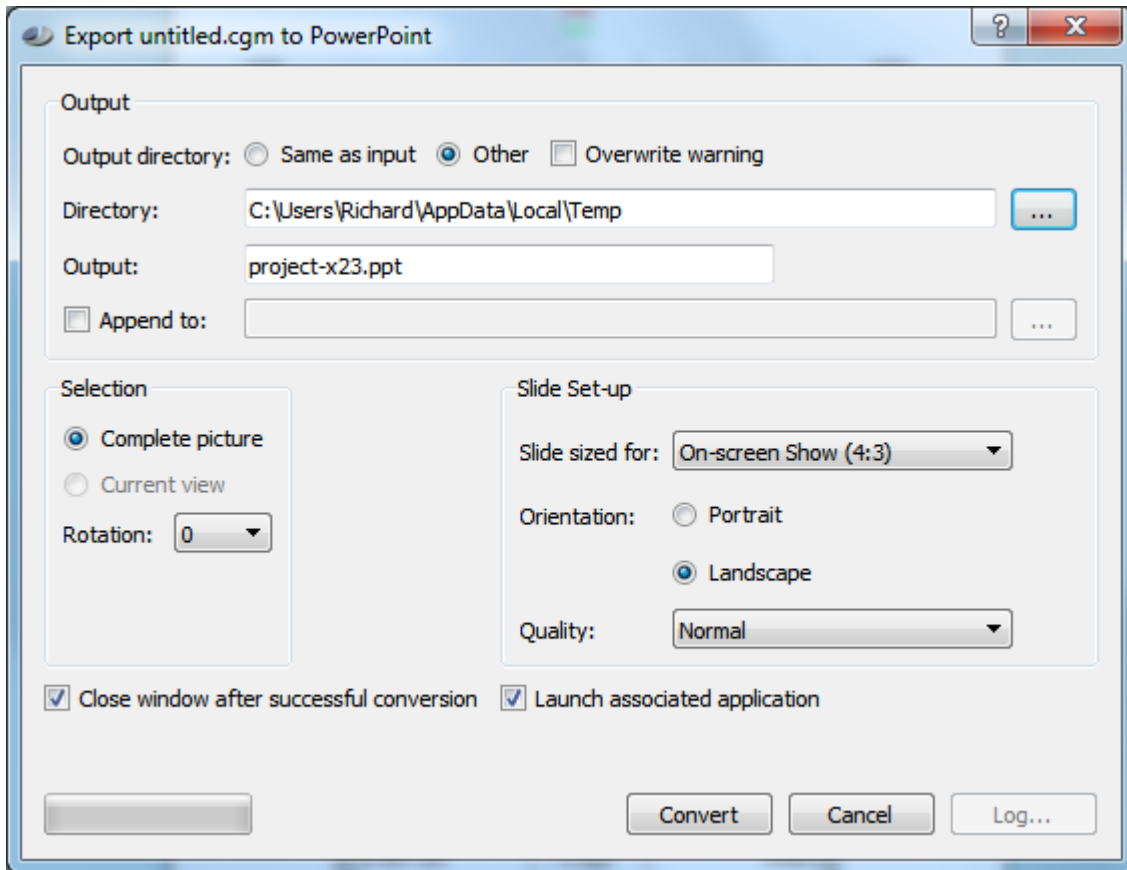
Do you have problems with Editing an image?

The Edit module is a program that allows you to edit vector images including CGM+ and CGM*PIP. Many of the features within Edit have been developed following requests from our customers who were not totally happy with their current editor. Our Editor now has a lot of new features such as curved text, (text) box shadows, rounded (text) boxes, layers and ranged searches and further various improvements such as better clipping of Lithology Symbols. The latest release has support for layers, the possibility to add your own geological patterns and to create your own custom line type.

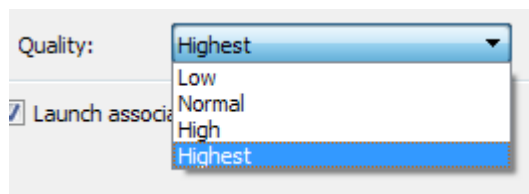


Are you using PowerPoint as presentation tool?

You can create a PowerPoint file by selecting the “Export to PowerPoint...” within JustIMAGE.



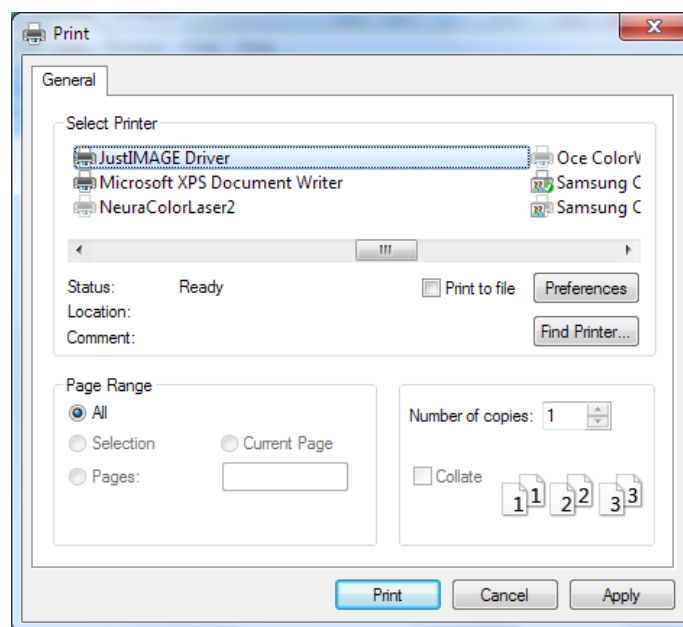
Set under “Slide Setup” the size and orientation of the PowerPoint slides. The image quality can be controlled as well. Higher quality settings mean better details, especially in text and thin lines, at the expense of larger PowerPoint files and slower conversion.



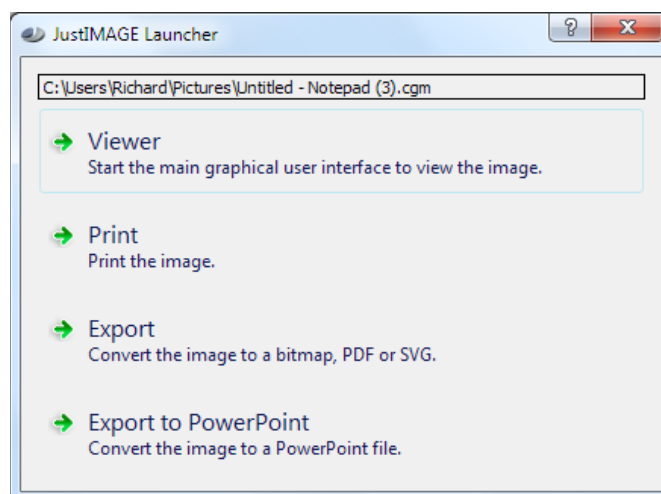
JustIMAGE Driver

The workflow on Windows with G&G applications in combination with JustCGM and JustIMAGE 5.1 required a lot of manual steps. First, you had to export the image from your G&G application to an output file. Secondly, you then had to start JustIMAGE manually. Thirdly, load that output file into JustIMAGE and then finally, you could then print the image or convert the image into the desired output format.

To remove these extra steps and improve the work-flow we have developed the "JustIMAGE Driver". Now a user can use the File -> Print window within the G&G Windows application to put the image directly into a JustIMAGE Viewer, Print or Export screen.



You will get the JustIMAGE Launcher and then you are able to make your selection.



Why should you use JustIMAGE 5.2

When was the last time you were looking for an image file?

When was the last time you were looking for an image file? You know roughly when it was created, by whom and some idea of its title – but where to start looking among the workstations and servers out there?

Well, help is at hand. We have created a Search Engine that can help you find that file quickly and easily.

It allows users to retrieve a file by specifying any known attributes without needing to know its location.

The 'Retrieve' window shows search criteria for a file named 'map*' of type 'JPEG', created and modified on 9-11-2017. A small thumbnail of a contour map is visible. Below is a table of search results.

	File Name	File Type	Location	Creation Time	Original User	Last Modified Time	Last User	Size
250	Lapture.JPG	image/jpeg	Pictures (Users/Richard/Documents/Customers/Shell/New Zealand)	11/8/2017 11:31 AM	manager	12/9/2013 11:20 AM	manager	93966
251	Microstation.JPG	image/jpeg	Pictures (Users/Richard/Documents/Customers/Shell/New Zealand)	11/8/2017 11:31 AM	manager	12/9/2013 11:20 AM	manager	120798
252	Tevet-1_Litho-Log.jpg	image/jpeg	Pictures (Users/Richard/Documents/Customers/sterling)	11/8/2017 11:31 AM	manager	3/23/2016 5:49 PM	manager	3543296
253	Tevet-1_Litho-Log.jpg	image/jpeg	Pictures (Users/Richard/Documents/Customers/Sterling Energy)	11/8/2017 11:31 AM	manager	3/23/2016 10:54 AM	manager	3543296
254	Capture.JPG	image/jpeg	Pictures (Users/Richard/Documents/Customers/stos)	11/8/2017 11:31 AM	manager	7/3/2012 7:43 AM	manager	232464
255	guy_download_history.jpg	image/jpeg	Pictures (Users/Richard/Documents/Customers/University Montford)	11/8/2017 11:31 AM	manager	9/25/2012 1:33 PM	manager	135492
256	Microstation_version_number.jpg	image/jpeg	Pictures (Users/Richard/Documents/Customers/Woodside)	11/8/2017 11:31 AM	manager	4/9/2013 5:04 PM	richard	185581
257	Map_With_Contours%.jpeg	image/jpeg	Pictures (Users/Richard/Documents/Customers/confidential)	11/9/2017 8:27 AM	richard	11/1/2013 2:37 PM	richard	1618953
258	Map_With_Contours%.jpeg	image/jpeg	Pictures (Users/Richard/ Documents/Customers/Justcroft)	11/9/2017 8:36 AM	richard	11/1/2013 2:37 PM	richard	1618953

The 'Store' window shows metadata for the file 'Map_With_Contours%.jpeg'. It includes creation and modification dates, file type, and a list of attributes.

Name	Value
1 Abstract	map with contours
2 Access Rights	Everyone
3 Audience	Geoscience staff
4 Date Available	30/10/2017 13:11
5 Conforms To	ISO
6 Contributor	Justcroft International
7 Date Created	30/10/2017 13:13
8 Creator	Richard Wijten