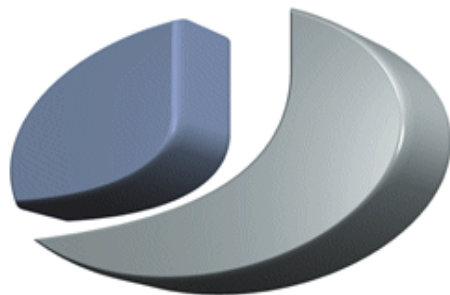


JUSTCROFT INTERNATIONAL  
**IMAGE DATA MANAGEMENT**



**Why JustIMAGE 5.4**

**Justcroft International**

# ***Why JustIMAGE 5.4***

Revision: 1.0, February 3, 2021  
Copyright© 2021

JustIMAGE, JustCGM and the Justcroft logo are trademarks of Justcroft International Ltd./ All rights reserved. PostScript® is a registered trademark of the Adobe Systems Incorporated. Windows® is a registered trademark of the Microsoft® Corporation. Other programs or company names mentioned in this manual may be either registered trademarks or trademarks of their respective owners.

## Table of Contents

Why you should use JustIMAGE 5.4.....	1
What to do with encrypted multi-page PDF files?.....	1
Do you have a lot of Schlumberger PDS files?.....	1
Embedded fonts in exporting PDF.....	2
Hot directory support.....	3
FlexNet Borrow.....	3
Wasting paper, ink and time?.....	4
Your files fail to load in CorelDRAW or Canvas?.....	5
Do you have PowerPoint issues with seismic images?.....	5
Do you have problems with Editing an image?.....	5
Layers and Sub-Layers.....	6
2013 Chart CGMW color codes.....	7
Favourites Symbols Bar.....	8
Apply to all elements for Lines on the layer and sublayers.....	8
Fill with Symbols.....	9
Fill with Images.....	10
Custom Line Type.....	11
Gradient fill.....	11
Are you using PowerPoint as a presentation tool?.....	12
JustIMAGE Driver.....	13
When was the last time you were looking for an image file?.....	14

## Why you should use JustIMAGE 5.4

Please find below an overview of the reasons why you should use JustIMAGE 5.4.

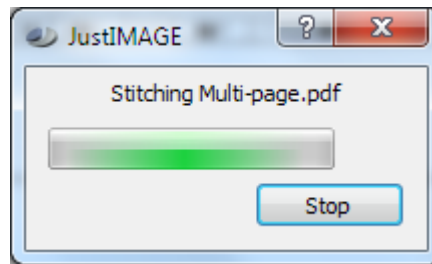
### What to do with encrypted multi-page PDF files?

Encrypted multi-page PDF files are often difficult to handle but using the JustIMAGE vector PDF converter and the Stitch tool you are able to create a continuous vector image.

With a nine page encrypted PDF file

VDC (0,0) (7801,10800) 13.002 x 18.000 inch (Pic. 1/9)

Using Stitch

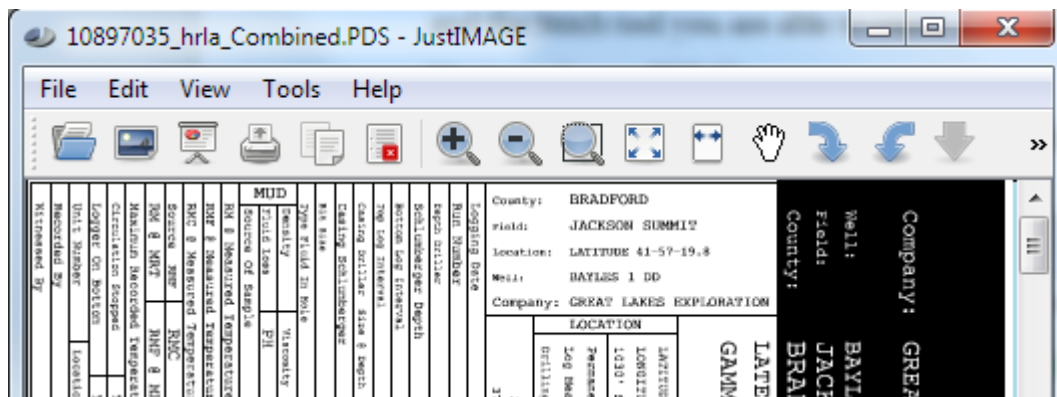


End result one continuous image

VDC (0,0) (7801,97201) 13.002 x 162.002 inch

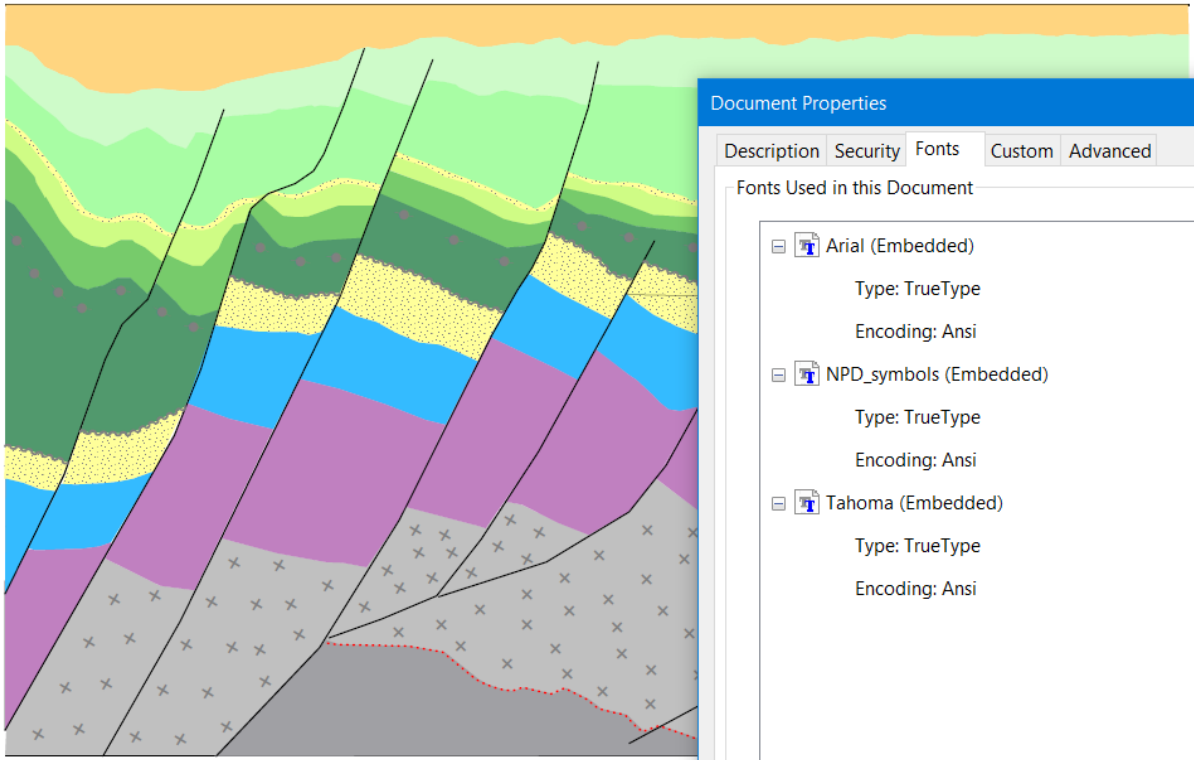
### Do you have a lot of Schlumberger PDS files?

Do you have a lot of Schlumberger PDS files and want to convert them into PDF? Use the Batch Processor to convert them in one go. JustIMAGE supports the PDS files after installing PDSView.



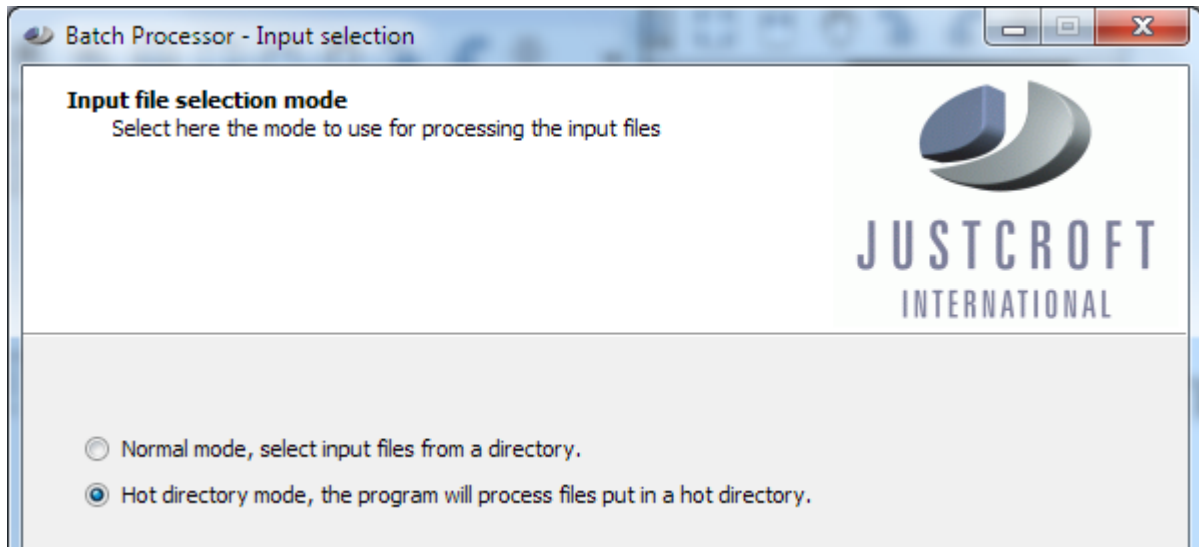
## **Embedded fonts in exporting PDF**

Use Export Embed Fonts to include the fonts in the PDF output file.



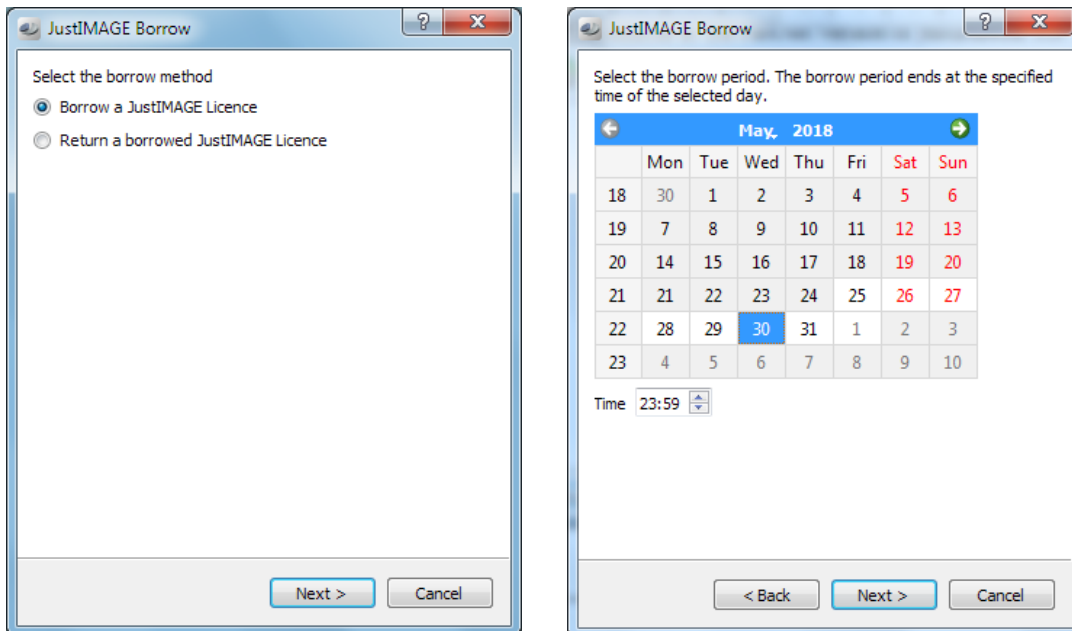
## Hot directory support

Use the Batch Processor to convert or print images in batch from selected input files or from a "Hot directory".



## FlexNet Borrow

The FlexNet borrow tool is available in the FlexNet version of JustIMAGE.

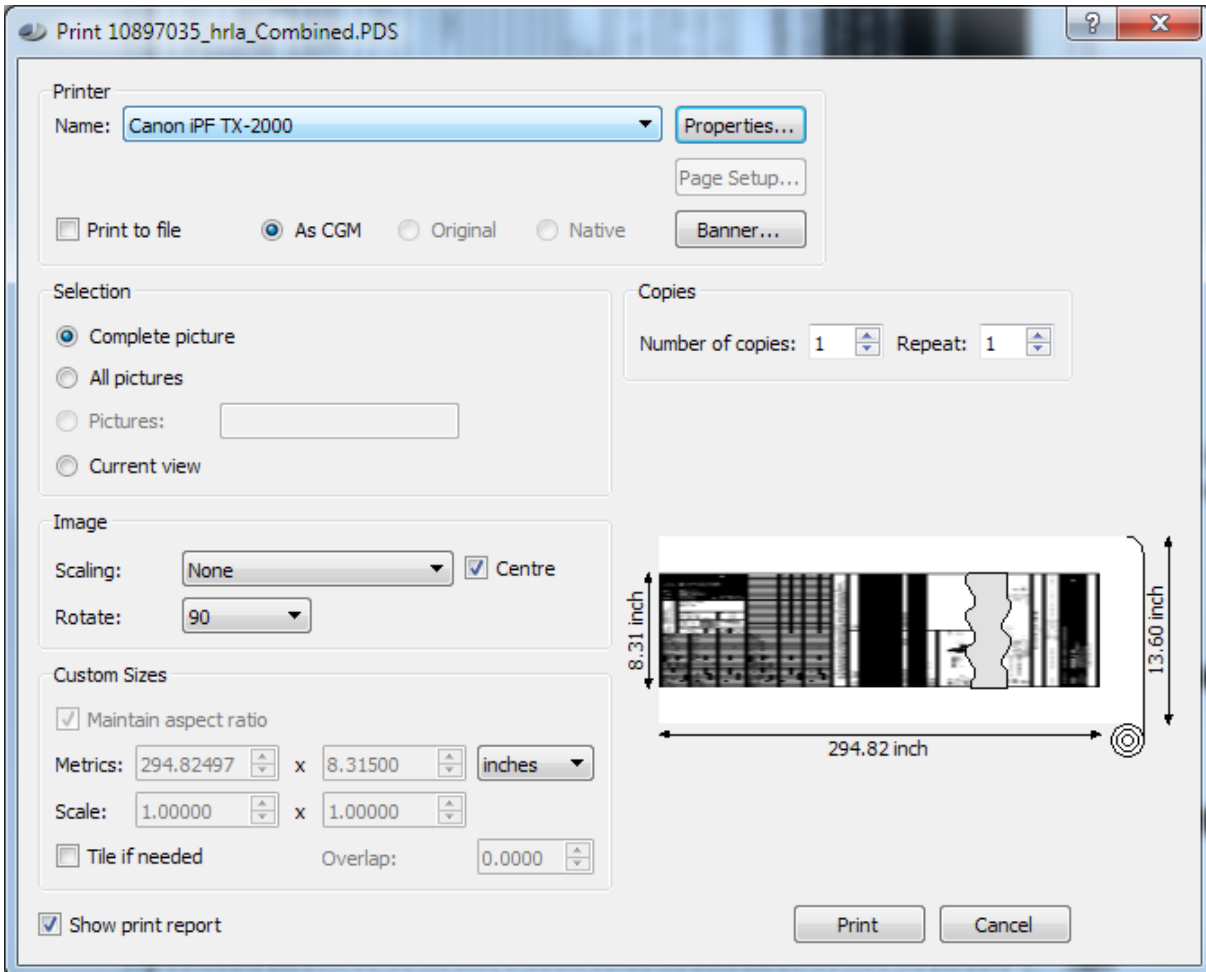


## Why you should use JustIMAGE 5.4

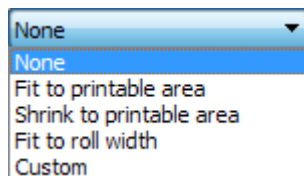
### **Wasting paper, ink and time?**

Have you had enough of wasting paper, ink and time when printing? Use the Justcroft drivers for the HP DesignJet, CANON GARO iPF, iSys, Neuralog or Printrex printers.

Printing well log images can be a hassle because you often need to select a printing area within the print window. Not with JustIMAGE, as it shows you the image compared with the roll paper width and length!



JustIMAGE also offers several scaling options.

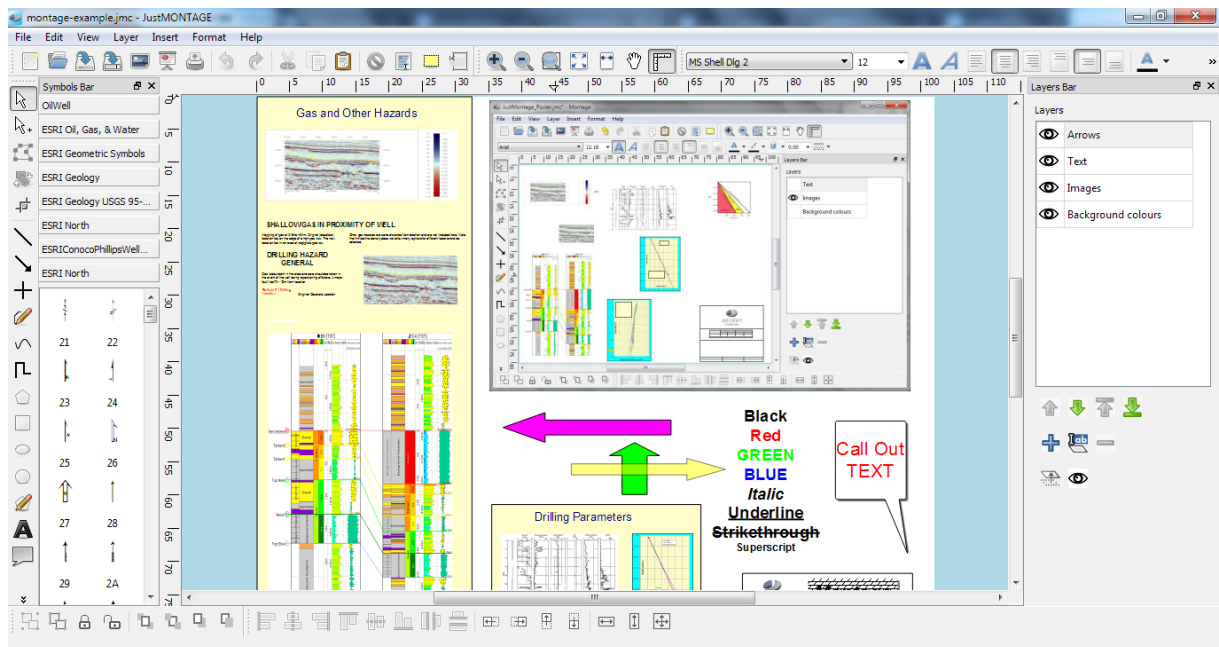


## **Your files fail to load in CorelDRAW or Canvas?**

CorelDRAW and Canvas have, as standard, no direct support for importing CGM+ and CGM\*PIP files. Use the CGM Optimiser program to create image files that can be imported into applications such as CorelDRAW and Canvas.

## **Do you have PowerPoint issues with seismic images?**

Are you having issues when using PowerPoint to create posters with seismic images? The JustMONTAGE module is a program that allows you to create compositions of images in combination with graphical shapes on a canvas.



## **Do you have problems with Editing an image?**

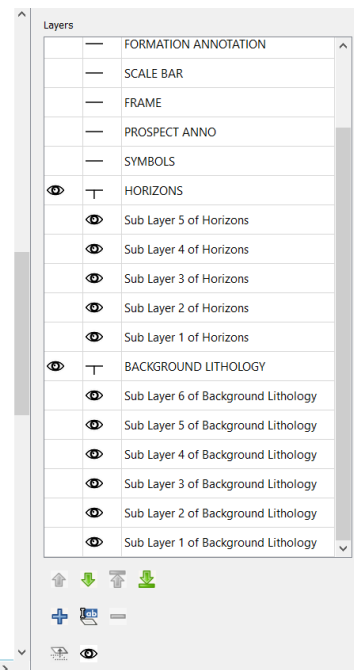
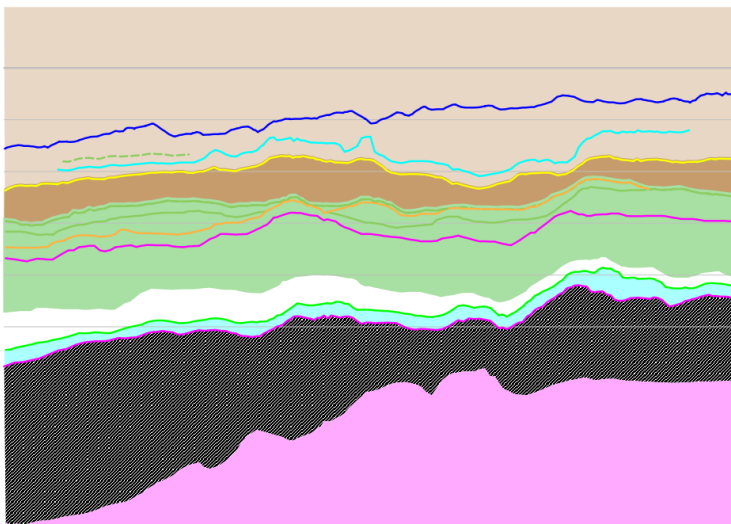
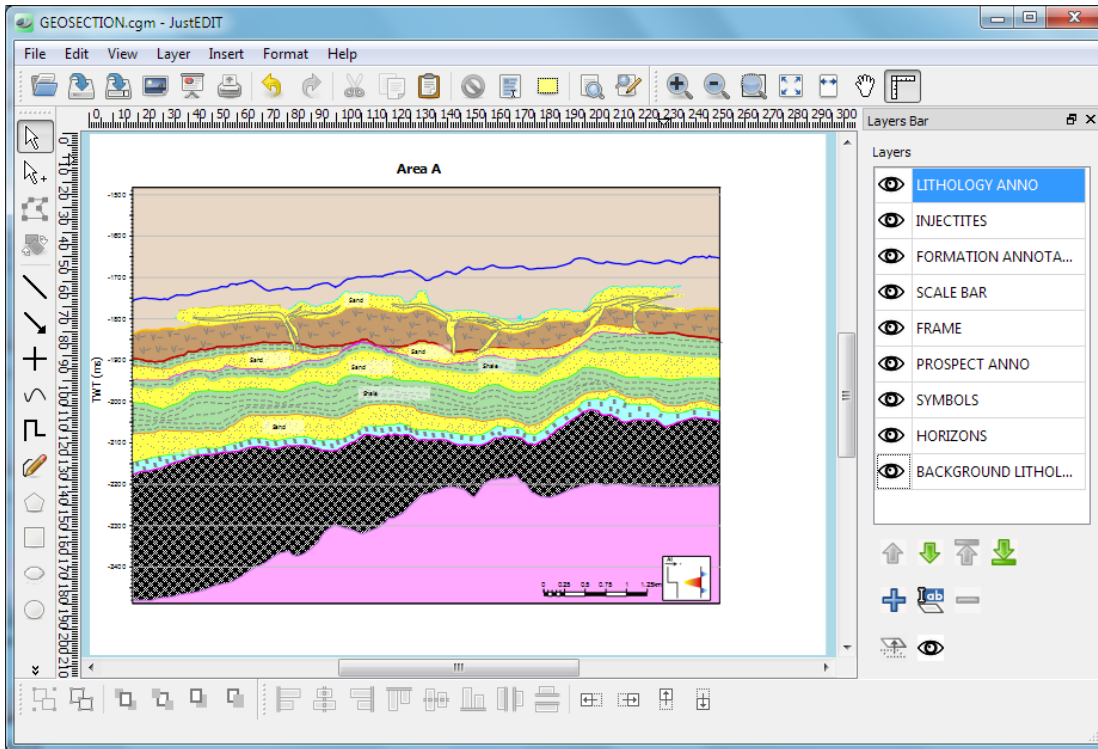
The JustEDIT module is a program that allows you to edit vector images including CGM+ and CGM\*PIP. Formats other than CGM are also supported if you have an Input Converter module license. Many of the features of JustEDIT have been developed following requests from our customers who were not totally happy with their current editor. Our editor has a lot of features such as curved text, (text) box shadows, rounded (text) boxes, layers and ranged searches and further various improvements such as better clipping of Lithology Symbols.



## Why you should use JustIMAGE 5.4

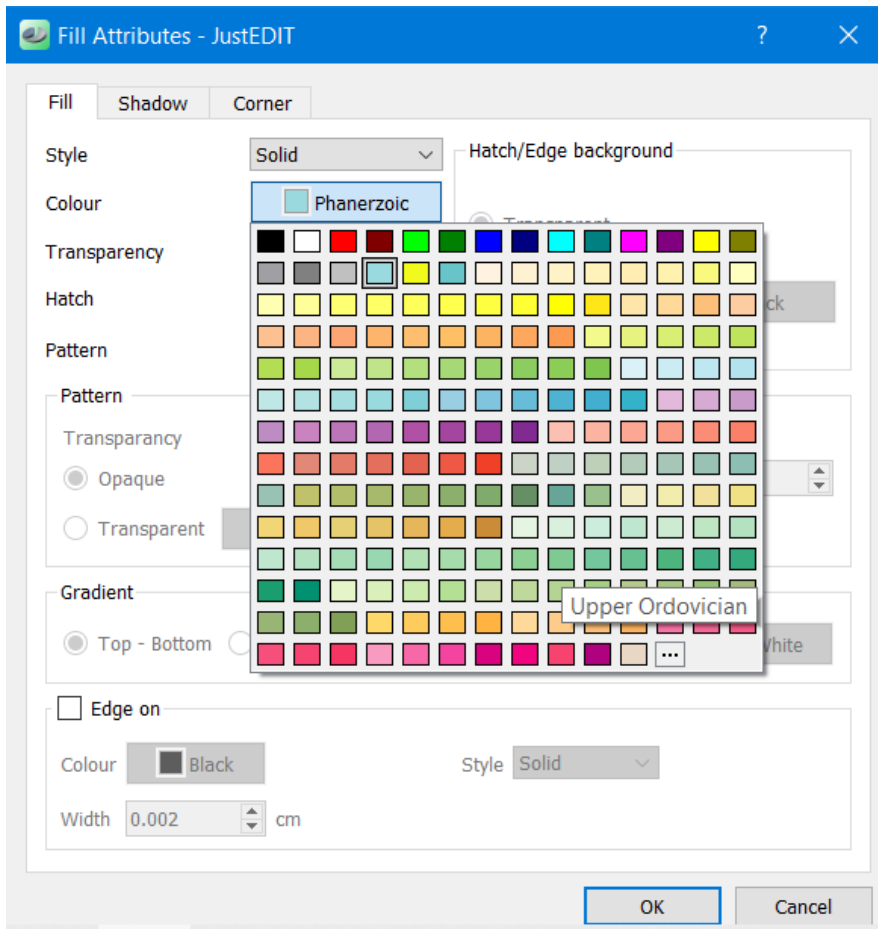
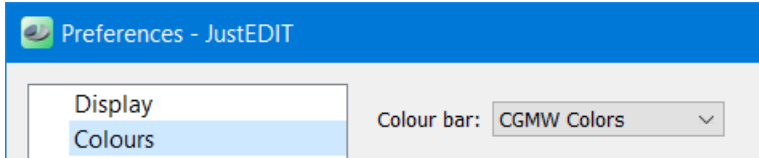
### Layers and Sub-Layers

JustEDIT has support for layers and one level sub-layers.



## 2013 Chart CGMW color codes

The 2013 chart CGMW color codes are available within JustEDIT and JustMONTAGE.

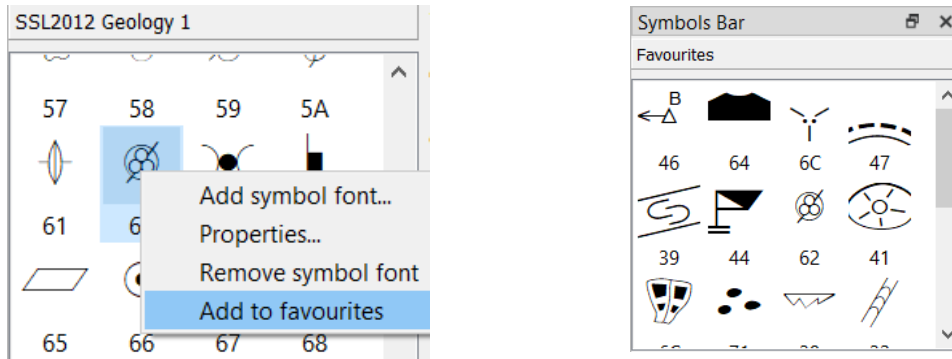


## Why you should use JustIMAGE 5.4

---

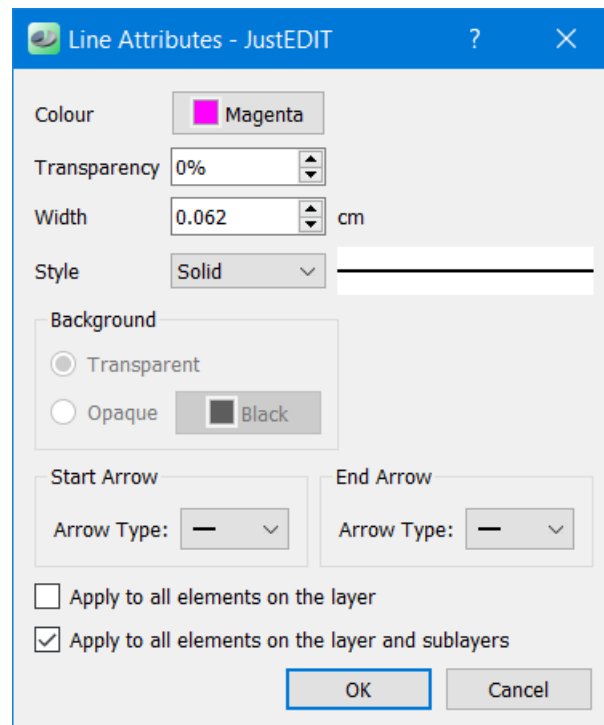
### **Favourites Symbols Bar**

Within JustEDIT and JustMONTAGE it is possible to add symbols to the Favourites Symbols Bar.



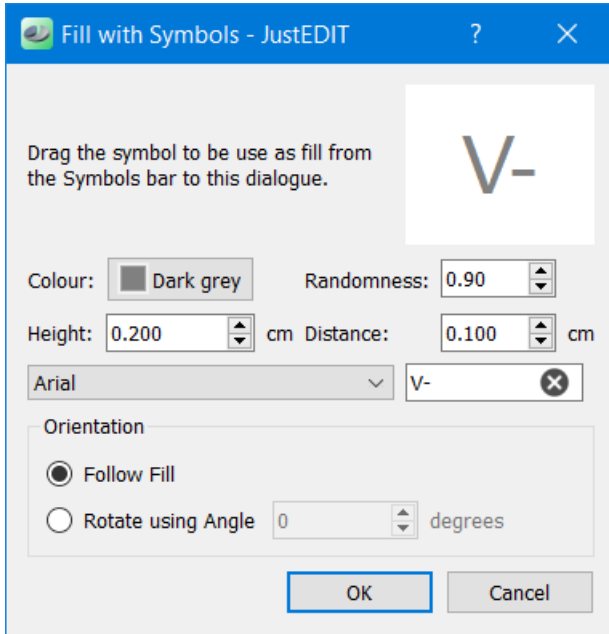
### **Apply to all elements for Lines on the layer and sublayers**

It is possible to apply line colour, transparency, width and style to all lines on the layer or on the layer and sublayers.

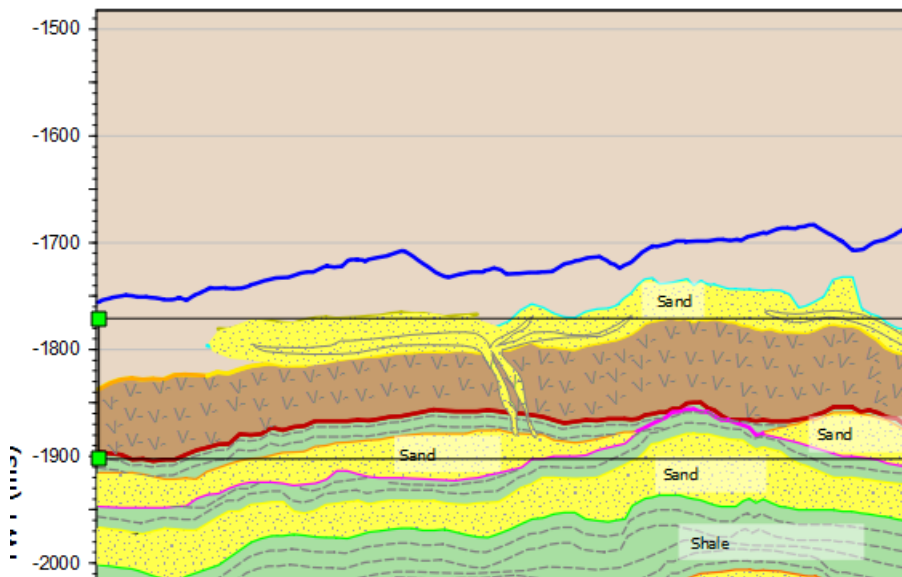


### Fill with Symbols

Fill a geological area with symbols and let the symbols follow the area.



### Area A

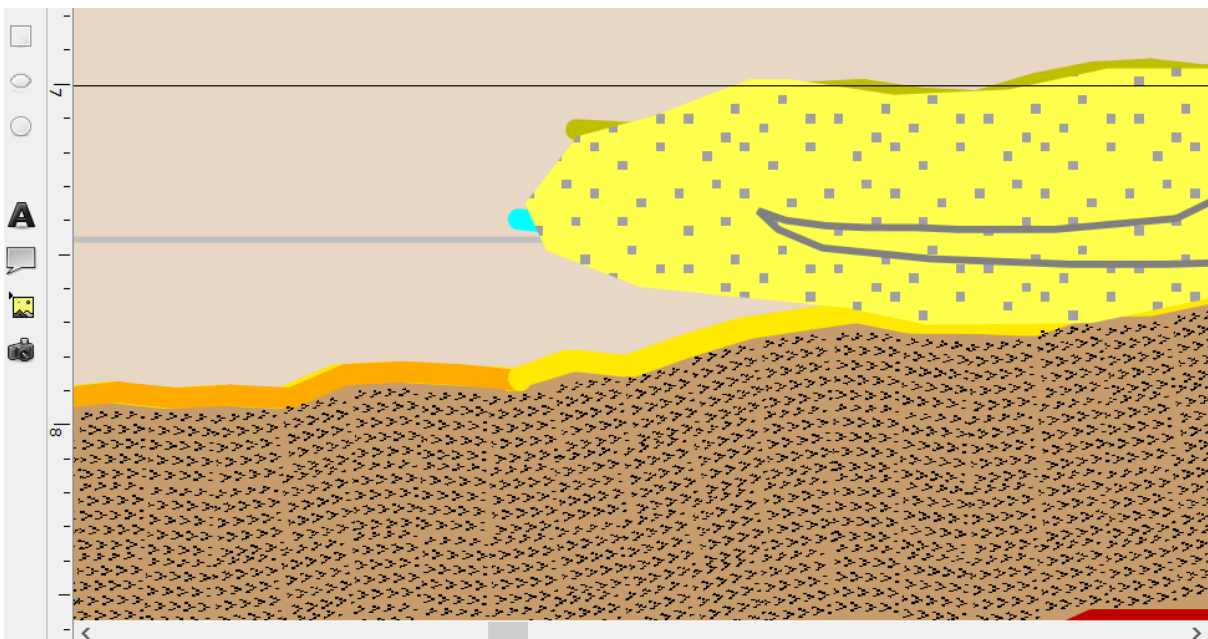
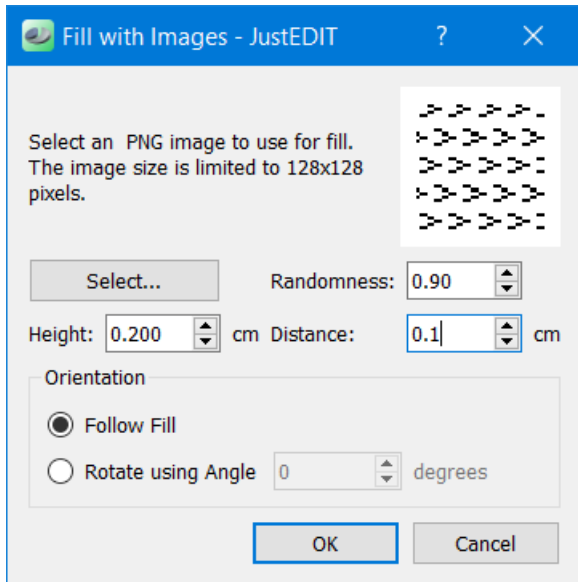


## Why you should use JustIMAGE 5.4

---

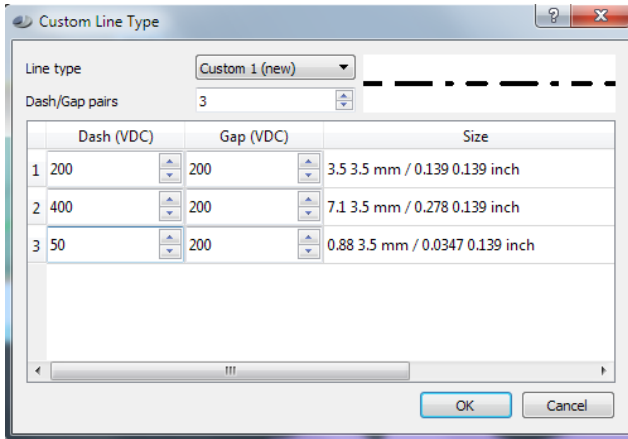
### ***Fill with Images***

Fill a geological area with an image and let the images follow the fill.



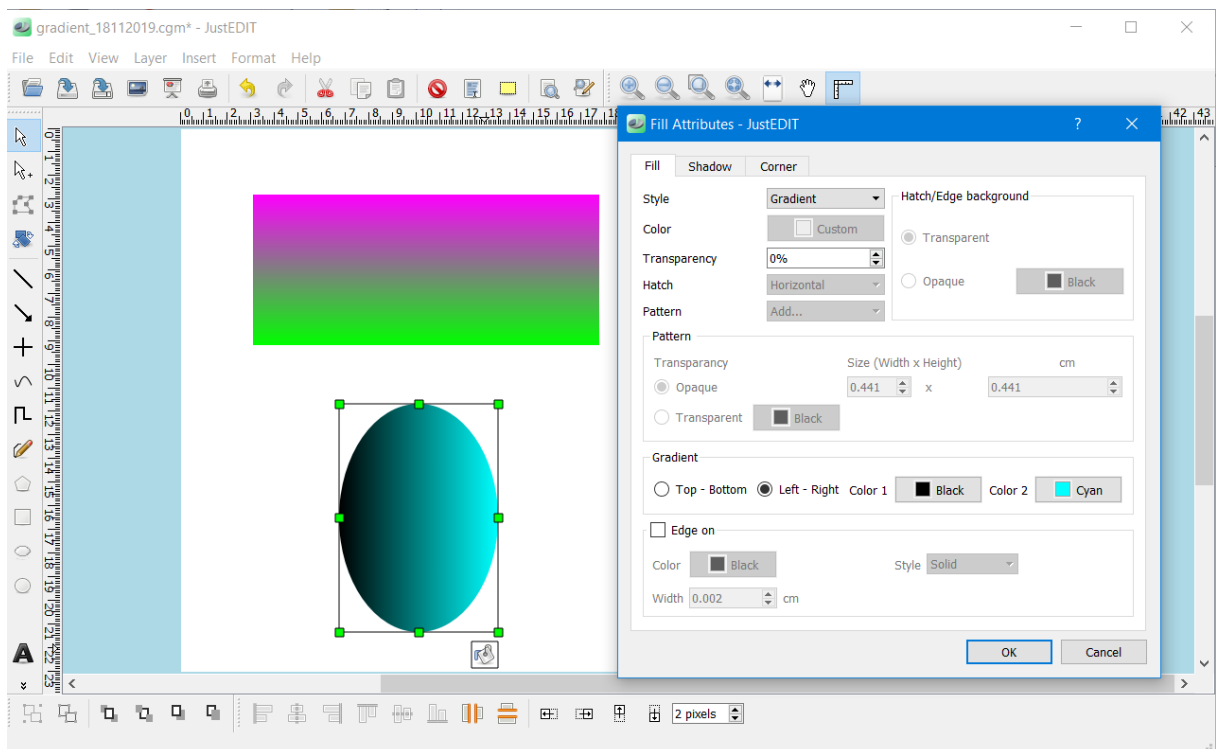
## Custom Line Type

Create your own custom line type.



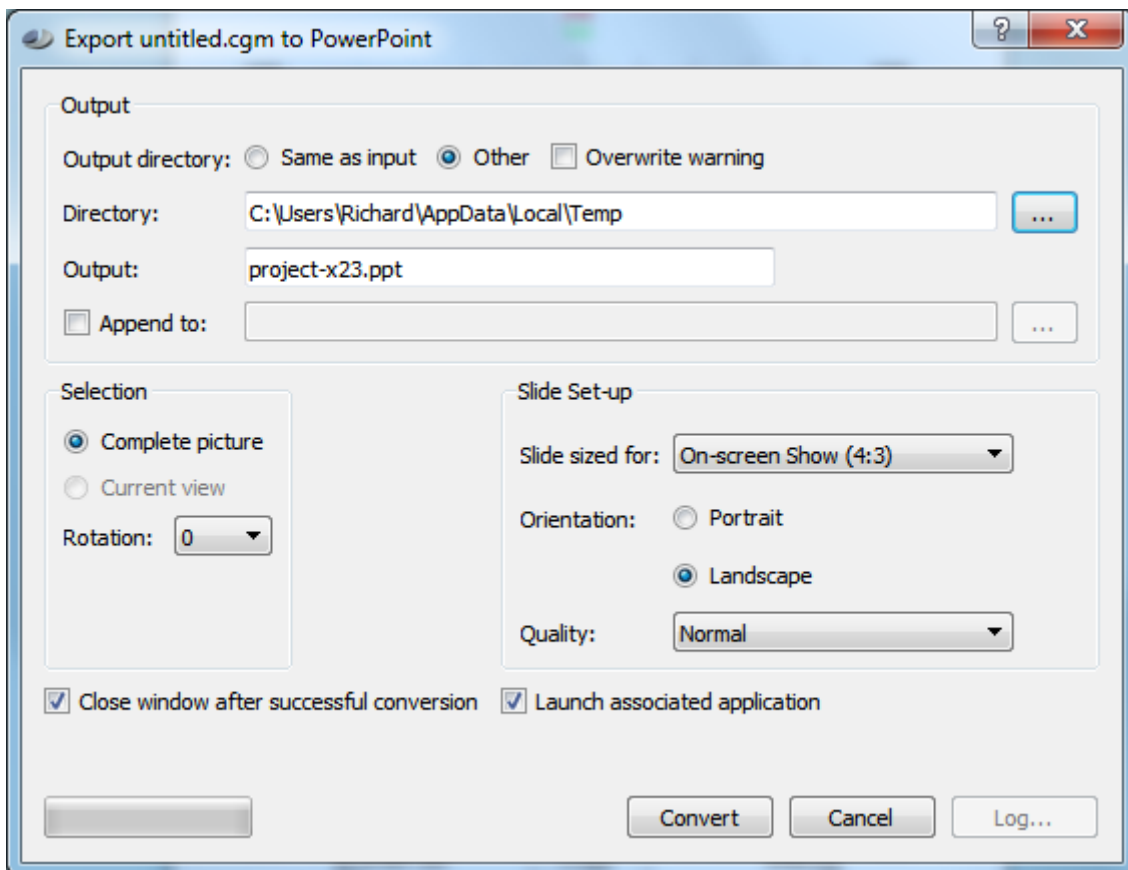
## Gradient fill

Within JustEDIT and JustMONTAGE there is Top – Bottom and Left – Right gradient fill support on polygons.

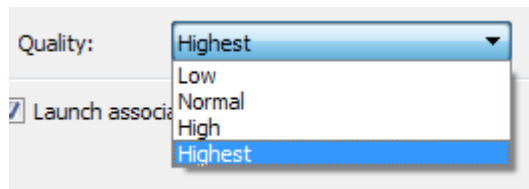


## ***Are you using PowerPoint as a presentation tool?***

You can create a PowerPoint file by selecting the “Export to PowerPoint...” within JustIMAGE.

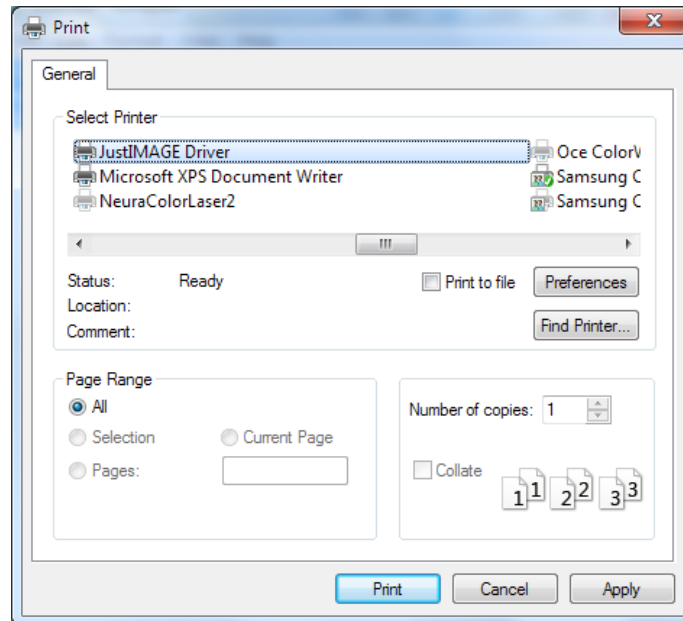


Set under “Slide Setup” the size and orientation of the PowerPoint slides. The image quality can be controlled as well. Higher quality settings mean better details, especially in text and thin lines, at the expense of larger PowerPoint files and slower conversion.

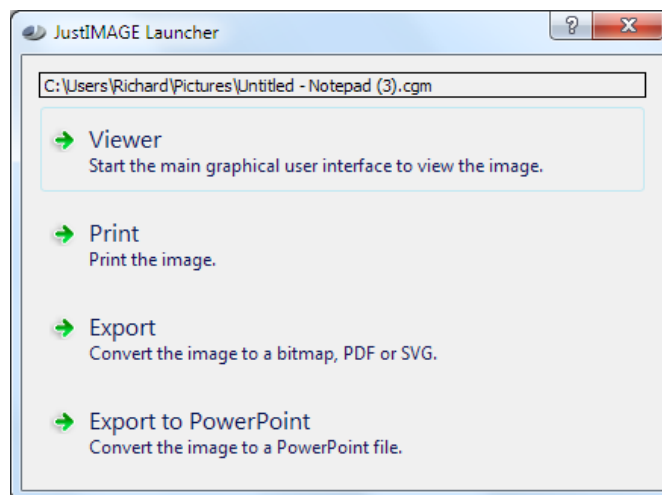


## JustIMAGE Driver

The workflow on Windows with G&G applications in combination with JustCGM and JustIMAGE 5.1 required a lot of manual steps. Firstly, you had to export the image from your G&G application to an output file. Secondly, you then had to start JustIMAGE manually. Thirdly, load that output file into JustIMAGE and then finally, you could then print the image or convert the image into the desired output format.



To remove these extra steps and improve the work-flow we have developed the "JustIMAGE



Driver". Now a user can use the File -> Print window within the G&G Windows application to put the image directly into a JustIMAGE Viewer, Print or Export screen. You will get the JustIMAGE Launcher and then you are able to make your selection.



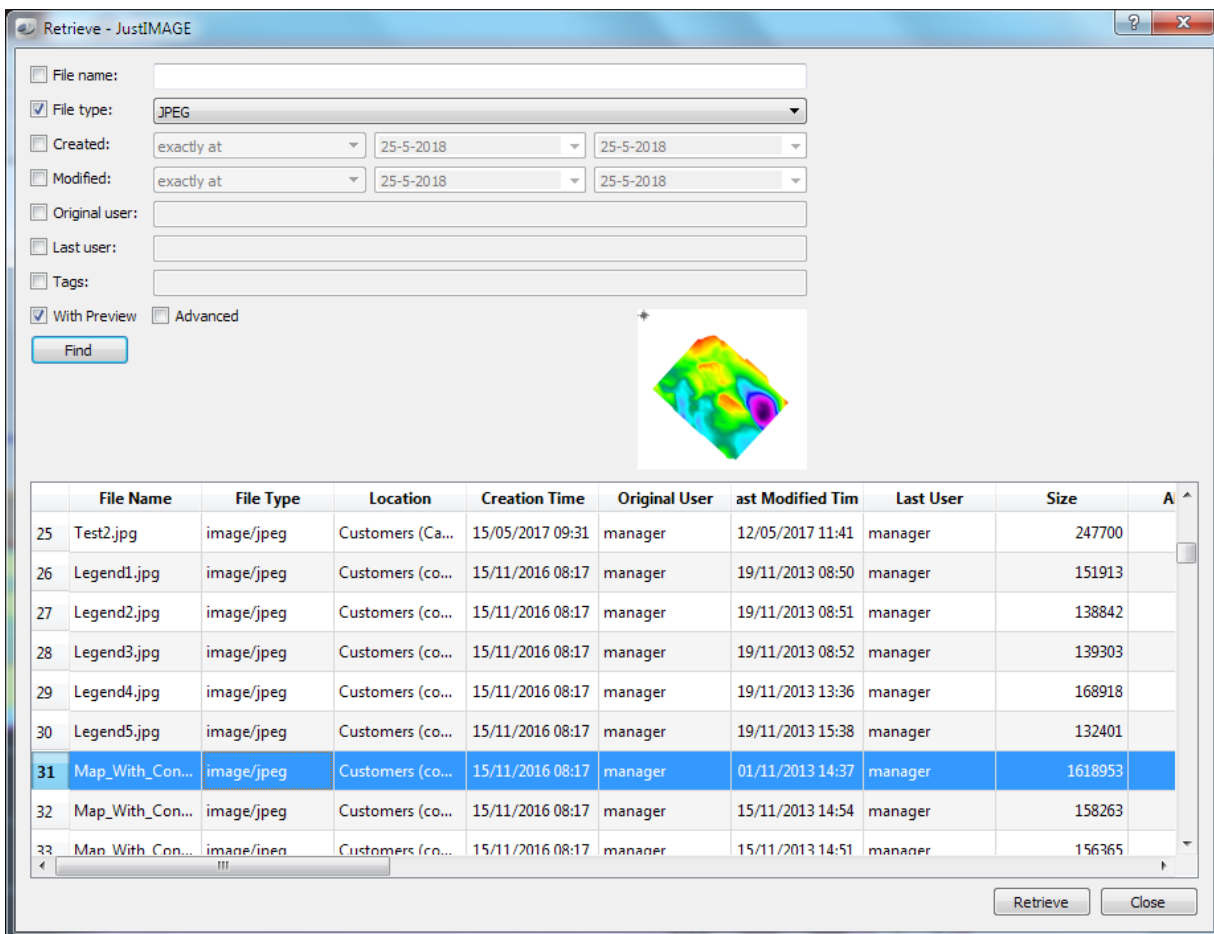
## Why you should use JustIMAGE 5.4

### **When was the last time you were looking for an image file?**

When was the last time you were looking for an image file? You know roughly when it was created, by whom and some idea of its title – but where to start looking among the workstations and servers out there?

Well, help is at hand. We have created JustSEARCH that can help you find that file quickly and easily.

It allows users to retrieve a file by specifying any known attributes without needing to know its location.



The screenshot shows the 'Retrieve - JustIMAGE' window. The search criteria are as follows:

- File name: (empty)
- File type: JPEG
- Created: exactly at 25-5-2018
- Modified: exactly at 25-5-2018
- Original user: (empty)
- Last user: (empty)
- Tags: (empty)
- With Preview: checked
- Advanced: unchecked

The 'Find' button is visible. A preview of a 3D topographic map is shown. Below the preview is a table of search results:

	File Name	File Type	Location	Creation Time	Original User	Last Modified Time	Last User	Size	A
25	Test2.jpg	image/jpeg	Customers (Ca...	15/05/2017 09:31	manager	12/05/2017 11:41	manager	247700	
26	Legend1.jpg	image/jpeg	Customers (co...	15/11/2016 08:17	manager	19/11/2013 08:50	manager	151913	
27	Legend2.jpg	image/jpeg	Customers (co...	15/11/2016 08:17	manager	19/11/2013 08:51	manager	138842	
28	Legend3.jpg	image/jpeg	Customers (co...	15/11/2016 08:17	manager	19/11/2013 08:52	manager	139303	
29	Legend4.jpg	image/jpeg	Customers (co...	15/11/2016 08:17	manager	19/11/2013 13:36	manager	168918	
30	Legend5.jpg	image/jpeg	Customers (co...	15/11/2016 08:17	manager	19/11/2013 15:38	manager	132401	
31	Map_With_Con...	image/jpeg	Customers (co...	15/11/2016 08:17	manager	01/11/2013 14:37	manager	1618953	
32	Map_With_Con...	image/jpeg	Customers (co...	15/11/2016 08:17	manager	15/11/2013 14:54	manager	158263	
33	Map_With_Con...	image/jpeg	Customers (co...	15/11/2016 08:17	manager	15/11/2013 14:51	manager	156365	

The 'Retrieve' and 'Close' buttons are visible at the bottom right of the window.